



FM18 + XSB Floor Scale

Precision Heavy Duty Floor Platforms



FM180, OIML 10,000e approved weighing indicator specially designed for static weighing and simple counting tasks. The 7 function keys provide easy, fast, direct and straight forward operation.

Supported by the built-in state-of-the-art technologies and knowledge, **FM180** delivers unexceptional fast, stable and error-free weighing results at all time.

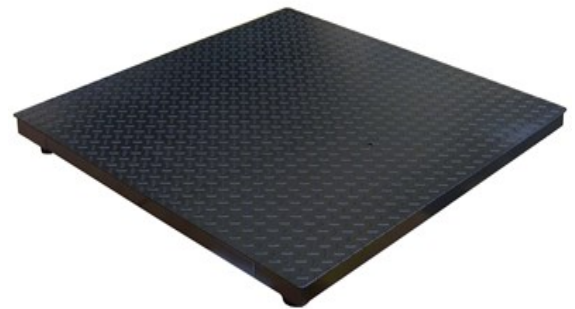


Approved Functions

- Weighing and Simple Counting
- Single and Dual Weighing Range
- Memory Accumulation
- Pre-set Tare
- Gross/Net Indicator
- Weighing Range Indicator
- Memory Indicator
- Standard and User Programmable Print
- Format Ticket and Label Printing

User Selectable Parameters

- 6 x Auto Power Off Time
- 4 x Filter Intensity Mode
- 3 x Backlight Mode
- 3 x Data Format
- 3 x M+ Mode
- 3 x Data Output Mode
- 7 x Initial Zero Range
- 7 x Manual Zero Range
- 4 x Data Transmission Time Interval
- 3 x RS232 Data Output Baud Rate



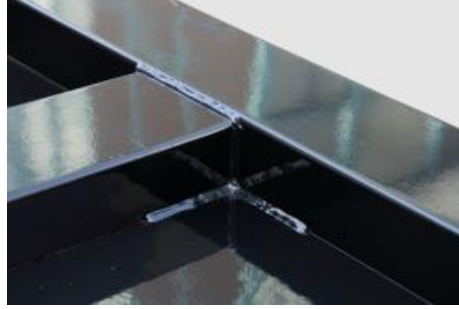
Key Features

- 24 bit Low-Noise Delta to Sigma to Delta (Δ - Σ) Analog-to-Digital Converter
- Support Single or Dual Weighing Range Mode
- Free Capacity and Division Setting
- kg & lb Conversion (Single Weighing Range Mode only)
- True 6-wire (with Remote Sense) Load Cell Compensation System
- Real Time Clock
- Linearity Compensation ON or OFF
- Independent Zero Calibration
- User selectable dot or comma for decimal point
- Calibration and Metrological Control / Access by Hardware or Software
- Non-Resettable Trailer Count to Record Calibration and Metrology Parameters Changes.
- Gravity Compensation via Key Board
- 6 x 28mm Wide Angle LCD Numeric Digits
- 1 x RS232 Output Port, Rechargeable Battery, Backlight, Pillar Mount Holder (\varnothing 35~38mm) and Universal Power Adaptor Included

XSB is designed & built to meet a wide range of heavy traffic & high resolution industrial applications up to 6000kg.

It delivers un-exceptional reliability, accuracy and skin smooth performance to meet weighing, batching and counting needs.

Versatility, Functionality and Accuracy are always Built-in



KEY FEATURES

- 24 bit Low-Noise Delta to Sigma to Delta (Δ - Σ) Analog-to-Digital Converter
- Support Single or Dual Weighing Range Mode
- Free Capacity and Division Setting
- kg & lb Conversion (Single Weighing Range Mode only)
- True 6-wire (with Remote Sense) Load Cell Compensation System
- Power up to 8 x 350 Ω Load Cells or 16 x 700 Ω Load Cells
- Supports 4-wire and 6-wire Load Cell Connections
- Real Time Clock
- Linearity Compensation ON or OFF
- Independent Zero Calibration.
- Auto or User Programmable Odd Weight Calibration
- Calibration and Metrological Control / Access by Hardware or Software
- Non-Resettable Trailer Count to Record Calibration and Metrology Parameters Changes.
- Gravity Compensation via Key Board
- 6 x 1-inch Wide Angle LCD Numeric Digits
- Capacity Tracking Bar to Show Applied & Remaining Weighing Capacity
- Battery Protection Features and Circuits
- Equipped with RS232, TTL Relay Output, Wireless Communication Interfaces/TTL RS232
- Backlight, Rechargeable Battery, Power Adaptor and Pillar (ϕ 35~38mm) Mount Holder Included

Quality, Structural Strength & Accuracy are Safeguarded by

- Material Grade
- Material Thickness
- Tooling & Method used to handle Material Cutting, Blending ... etc.
- Smart & CNC Made Oversized Heavy Duty Load Cell Supporting & Mounting Blocks
- Strict Construction Accuracy Standards Applied
- Smart & High Quality Stainless Steel Junction Box used
- OIML / NTEP C3 Approved or FM Special Grade Load Cell
- High Density Channel Frame Allocation
- High Quality Epoxy Coating

Key Features

- Extremely Rigid Structural Steel Channel Frame Specifically Designed for Heavy Traffic
- Super Strong Channel Frame Provides Extra Protection by Enclosing the Load Cells, Cable and Junction Box Inside and away from Chemicals and Other Industrial Element
- Heavy-Duty Industrial design Threaded Eyebolt Holes for Easy Lifting
- Top-of-Floor or In-Floor Mounting
- Swivel Adjustable Feet Eliminate Weighing Errors due to Misalignment
- Construction Accuracy: - Better than 0.25%

Versatility, Functionality and Accuracy are always Built-in

XSB Series Precision Heavy Duty Floor Platforms

Specifications

Model No.	Platform Size (mm)		Load Cell		
XSB-0808 (A, N)	800 x 800		Type: - • A: - OIML / NTEP C3 approved • N: - FM Special Grade Assignment: - • 4 x 500kg for Max = 1T • 4 x 1000kg for Max = 2T • 4 x 1500kg for Max = 3T • 4 x 2000kg for Max = 5T • 4 x 3000kg for Max = 6T		
XSB-0810 (A, N)	800 x 1000				
XSB-1010 (A, N)	1000 x 1000				
XSB-1012 (A, N)	1000 x 1200				
XSB-1212 (A, N)	1200 x 1200				
XSB-1215 (A, N)	1200 x 1500				
XSB-1515 (A, N)	1500 x 1500				
XSB-1520 (A, N)	1500 x 2000				
XSB-2020 (A, N)	2000 x 2000				
Nominal Capacity (Max)	1T	2T	3T	5T	6T
Adjusted Eccentric Accuracy (kg)	0.05	0.1	0.2	0.5	0.5
Structural Strength	Maximum = 6T; Safe Overload = 7.2T				
Material & Structural Data	All Material = Mild Steel Thickness: - • Top Plate Thickness \geq 5.14mm • Underneath Columns Thickness \geq 3.5mm • Load Cell Support Blocks \geq 18.0 mm Width: - • Width of Load Cell Mounting Columns = 120mm • Width of Reinforce Columns = 120mm Overall Height: - • 71mm (platform only) • 97mm (completed with Load Cells and Adjustable Feet)				
Construction Accuracy	Better than 0.25%				
Load Cell & Output	OIML / NTEP C3 Approved or FM Special Grade 40CrNiMoA Alloy Steel Load Cells, 3mV/V				
Junction Box	JB-46S Stainless Steel Junction Box				
Signal Cable	5m 6-wire Shielded Cable Included				
Operating Environment	-10 ~ 40°C (14 ~ 104°F) Non-condensed R.H. \leq 85%				

In the interest of improvement, specifications may change prior to notice

Option

- Mild Steel Ramp
- Pit Installation Frame

Order Code

Model No.: - Nominal Capacity - Load Cell Type.

Examples -

- XSB-1010-1T-A for platform size = 1 x 1m; nominal capacity = 500kg; with approved load cells.
- XSB-1215-2T-N for platform size = 1.2 x 1.5m; nominal capacity = 2000kg; with FM Special Grade load cells.



Fidelity Measurement Co., Ltd.
<http://www.fi-measurement.com>
 e-mail: info@fi-measurement.com

REV.: XSB/18/01/02